

Introduction

TUFLOW is a powerful 1D and 2D computational engine for simulating floods, tides and pipe network hydraulics. Developed by BMT WBM Pty Ltd, it has been successfully applied to studies ranging from broad-scale coastal storm tide inundation to fine-scale urban flooding. It is used commercially by over 300 organisations across 16 countries, and is the most widely used 1D/2D flood modelling software in Australia and the UK.

TUFLOW Users Workshops

The workshop primarily focuses on applying new and upcoming TUFLOW features, and advanced modelling techniques for creating high quality TUFLOW models of urban and rural areas. As an existing TUFLOW modeller you will greatly benefit from attending the workshop to further refine and enhance your modelling skills. Bill Syme, the primary author of TUFLOW, is giving the workshops.

Lunch and morning/afternoon tea/coffee will be provided.

TUFLOW Key Features:

Implicit solution of the full 2D free-surface wave equations including terms for inertia, turbulence and atmospheric pressure distribution.

Explicit solution of the full 1D St Venant equations and bridge/weir/culvert/pipe solvers.

Powerful 1D/2D dynamic linking options for combining any number of different 1D and 2D domains as one model.

Effective data handling, quality control and reporting through the use of GIS as the model development environment.

New generation Graphical User Interfaces (GUI) available through SMS (www.aquaveo.com/sms) and XP-SWMM2D (www.xpsoftware.com).

New FV (Finite Volume) flexible mesh solver, and new AD and Morphology Modules scheduled for 2010.

Who Should Attend?

The TUFLOW Users Workshop is aimed at existing users to bring them up to speed with the latest developments and modelling techniques. It is also an excellent opportunity to discuss TUFLOW related issues by way of an open forum.

Agenda

8:45 to 9:00 - Registration

Coffee and Tea available

9:00 to 10:15 - New Features in TUFLOW

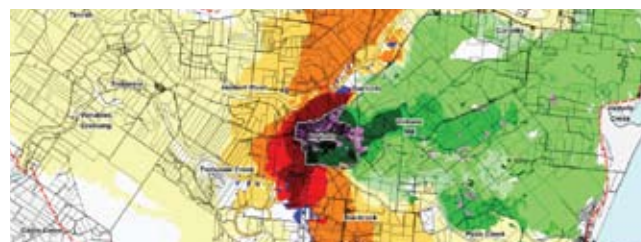
- 64-bit TUFLOW
- ArcGIS shp file support
- XMDF output files (an alternative to .dat files)
- Evacuation Route Feature and enhancements to hazard, velocity and duration/warning time mapping
- New material (land-use) lookup file, including n vs Depth Curves and infiltration options
- TUFLOW FV (Flexible Mesh Finite Volume engine); TUFLOW AD and TUFLOW MOR.

10:15 to 10:30 - Morning Tea

10:30 to 12:30 - Building Healthy Models

This session will workshop the indicators of an unhealthy model and techniques for making the model healthy. These techniques produce faster running, more stable and reliable models.

12:30 to 1:30 - Lunch (provided)



1:30 to 3:00 - Advanced TUFLOW Modelling 1

Using the various Z Shape layers that can significantly improve your efficiency. Presentation and discussion on advanced user modelling of cross-drainage hydraulic structures in 1D and 2D.

3:00 to 3:15 - Afternoon Tea

3:15 to 4:45 - Advanced TUFLOW Modelling 2

1D/2D surface water modelling of urban areas with extensive pipe networks and open channels. Tips and tricks, new features including the new manhole and gutter line layers will be demonstrated and examples provided. Question and answer session and/or further workshopping of TUFLOW modelling techniques.

Questions or topics for discussion can be emailed in advance of the workshop to bill.syme@bmtwbm.com.au

Users Workshops 2010

Dates/Times

Users Workshops

Start: 9:30, Finish: 4:30. / Morning Tea / Lunch / Afternoon Tea

Melbourne: Wednesday, June 9th

Brisbane: Wednesday, June 16th

Sydney: Wednesday, June 23rd

Location & Venue

Melbourne: WBM Melbourne, Level 5, 99 King Street
Melbourne, Vic. 3000.

Brisbane: Engineers Australia, 447 Upper Edward Street,
Spring Hill, Qld. 4004.

Sydney: Christie Conference Centre, 100 Walker St, North
Sydney, www.christieconference.com.au.

Cost

1st Attendee \$495 (inc. GST)

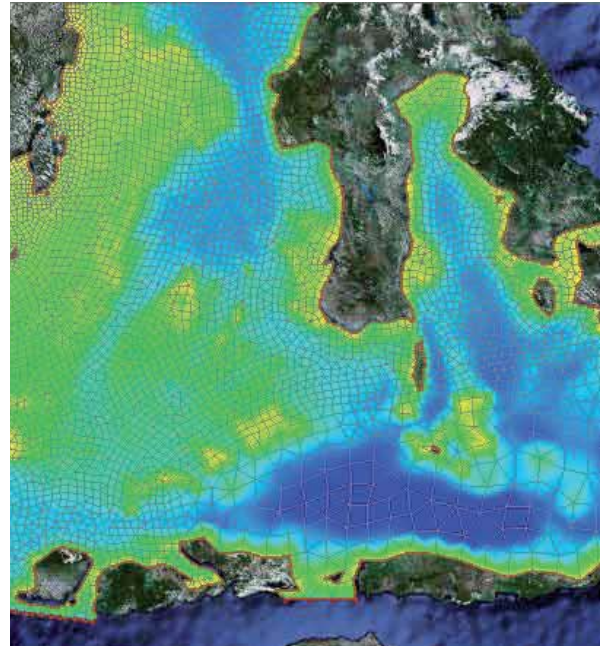
2nd, 3rd, 4th,... Attendees \$330 (inc. GST)

How Do I Arrange Attendance?

To register, please complete below and return to:

Sam Parker,
BMT WBM Brisbane,
490 Upper Edward Street,
Brisbane, Qld. 4001,

or email:
sam.parker@bmtwbm.com.au



Complete and send this section to BMT WBM with your payment:
(Fax to +61 7 3832 3627 or scan and e-mail [attention : Sam Parker] to sam.parker@bmtwbm.com.au)

Title First Name Surname

Organisation Address

Postcode Telephone Fax

Email

Indicate which session (please tick)

First Attendee TUFLOW Users Workshop (\$495) Sydney Melbourne Brisbane

Number of additional attendees (\$330 per attendee)

Title First Name Surname

Title First Name Surname

Title First Name Surname

Payment amount :

Payment method : Credit Card Cheque (please attach) Invoice (please attach purchase order)

Card Type : Visa Mastercard Bankcard

Credit card No : Expiry Date : / /

Name on Card :

Signature :

BMT WBM Pty Ltd
490 Upper Edward Street
Brisbane Queensland 4000 Australia
PO Box 203 Spring Hill 4004

ABN 54 010 830 421
Tel : + 61 7 3831 6744
Fax: + 61 7 3832 3627