

1.1 Installing a Dongle

A TUFLOW dongle is required to run TUFLOW, but is not required when using third party software such as a GIS, text editor or SMS.

As of 2010, two brands of dongles are available from BMT WBM, and several third-party dongles are supported that are licensed and maintained by on-sellers of TUFLOW. For the latter, please refer to the on-sellers documentation for setting up the dongle.

1.1.1 BMT WBM Issued Dongles

BMT WBM issued dongles are either:

- A SoftLok (blue) dongle. These dongles were stopped being issued in August 2010 as the vendor could not provide 64-bit support, but will continue to be supported by future versions of TUFLOW. Note, that they only function with 32-bit versions of TUFLOW. SoftLok dongles can be exchanged for a new WIBU (metal) dongle for a nominal fee (please contact sales@tufLOW.com).
- A WIBU Codemeter (metal) dongle (see Section 1.1.4). These dongles were introduced in 2010. They offer a range of advantages over the SoftLok dongles such as:
 - support for 64-bit platforms and non-Windows platforms;
 - network licence manager runs as a service (ie. the computer with the network dongle needs to be on, but no one needs to be logged in);
 - much more flexible licensing options (for example, it is now possible to have a Network 10 TUFLOW licence with a Network 5 Multiple 2D Domains Module licence – with the SoftLok dongles a Network 10 Multiple 2D Domains Module would have to have been purchased);
 - multiple WIBU dongles (local and/or network licensed) are accessible together (ie. if all licences from one dongle are taken, licences from other dongles are automatically checked and taken);
 - (hopefully) no network ghost licences; and
 - no need for TUFLOW to control limiting of local licences (TUFLOW's run key is not used if the number of CPUs/cores exceeds the local licence limit).

For the 2009-07, 2008-08, 2007-07 and 2006-06 releases, the “DA” builds or later will need to be used to recognise a WIBU Codemeter (metal) dongle.

For 64-bit versions of TUFLOW, a WIBU Codemeter (metal) dongle needs to be used, or if supported, a third-party dongle. SoftLok (blue) dongles cannot be used for 64-bit TUFLOW builds, except for Build 2009-07-AF-iDP that used a workaround for standalone dongles only (it is not recommended to use this 64-bit build unless the same results occur using a 32-bit 2009-07 build as the 64-bit build has known bugs).

Two types of licences are provided for both brands:

- Local or Standalone Licence – by default, allows up to four (4) TUFLOW processes to be run from the one computer. Less and more than four simulations can be programmed (contact sales@tuflow.com).
- Network Licence – allows up to a specified limit the number of TUFLOW processes running at any one time across the organisation’s LAN (Local Area Network).

1.1.2 Protocols for Accessing Dongles

If more than one type of dongle is available the protocols for taking and checking licences are:

- 1 WIBU Codemeter dongles are searched first, and if a licence is free it is taken.
- 2 If no WIBU licence is available, a licence from a SoftLok dongle is sought.
- 3 If no SoftLok licence is available, you can optionally set via the "C:\BMT_WBM\WIBU_Dongle_Settings.dcf" file described below, for TUFLOW to continue to try and find an available WIBU dongle licence. This is useful if there are no free licences and you wish to start a simulation (the simulation will start once a free licence becomes available).
- 4 Once a simulation is underway, and if the licence is lost, TUFLOW will try to regain a licence, but it cannot switch to a different dongle brand.

1.1.3 “C:\BMT_WBM\WIBU_Dongle_Settings.dcf” File

The “C:\BMT_WBM\WIBU_Dongle_Settings.dcf” file can be used to set the retry interval for searching or reinstating a licence and other settings. It has the same form and notation as a TUFLOW .tcf file.

```
! Use this file to set WIBU Dongle Parameters
! Use ! or # to comment out commands or make comments
Retry Time == 60 ! seconds. Values less than 3 are set to 3. Default = 60.
Retry Count == 0 ! Use -1 for indefinitely.
Simulations Log Folder == C:\BMT_WBM\log ! Path or URL to global .log file
Ignore Other Dongles == ON ! If ON, searches for WIBU dongles only. Default is OFF.
```

“Retry Time” sets the interval in seconds for retrying to take a licence or regain a lost licence. The default is 60 and values less than 3 are set to 3.

“Retry Count” sets the number of times to retry for a licence at the start of a simulation. If a licence is lost during the simulation, TUFLOW tries indefinitely to regain a licence so as not to lose the simulation.

“Simulations Log Folder” sets the folder path or URL to a folder for logging all simulations. If the keywords “DO NOT USE” occur within the folder path or URL, this feature is disabled. The -slp option to set the Simulation Log Folder on a SoftLok dongle is not available for WIBU dongles. Also see [Simulations Log Folder](#).

1.1.4 WIBU Codemeter (Metal) Dongles (Local and Network)

1.1.4.1 Installing Codemeter Software


Download the Codemeter install exe using one of the links below, and run the appropriate exe on each computer wishing to access the dongle. Note: check http://www.tuflow.com/Downloads_Misc.htm for later versions than the links to v4.20 below.

Windows 32-bit Platforms:

<http://www.tuflow.com/Downloads/WIBU/CodeMeterRuntime32.v4.20.exe>


Windows 64-bit Platforms:

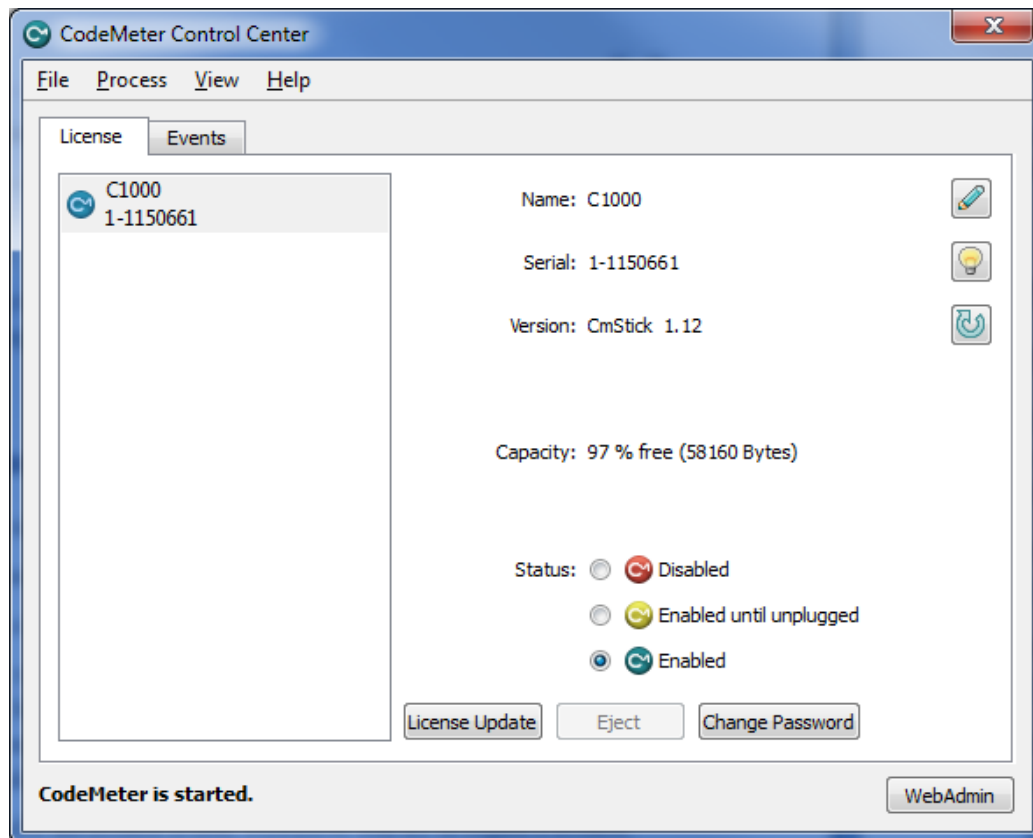
<http://www.tuflow.com/Downloads/WIBU/CodeMeterRuntime64.v4.20.exe>

Once installed, a Codemeter icon  should appear in the system tray. The icon changes colour and appearance depending on the number of dongles attached to the computer as discussed further below.

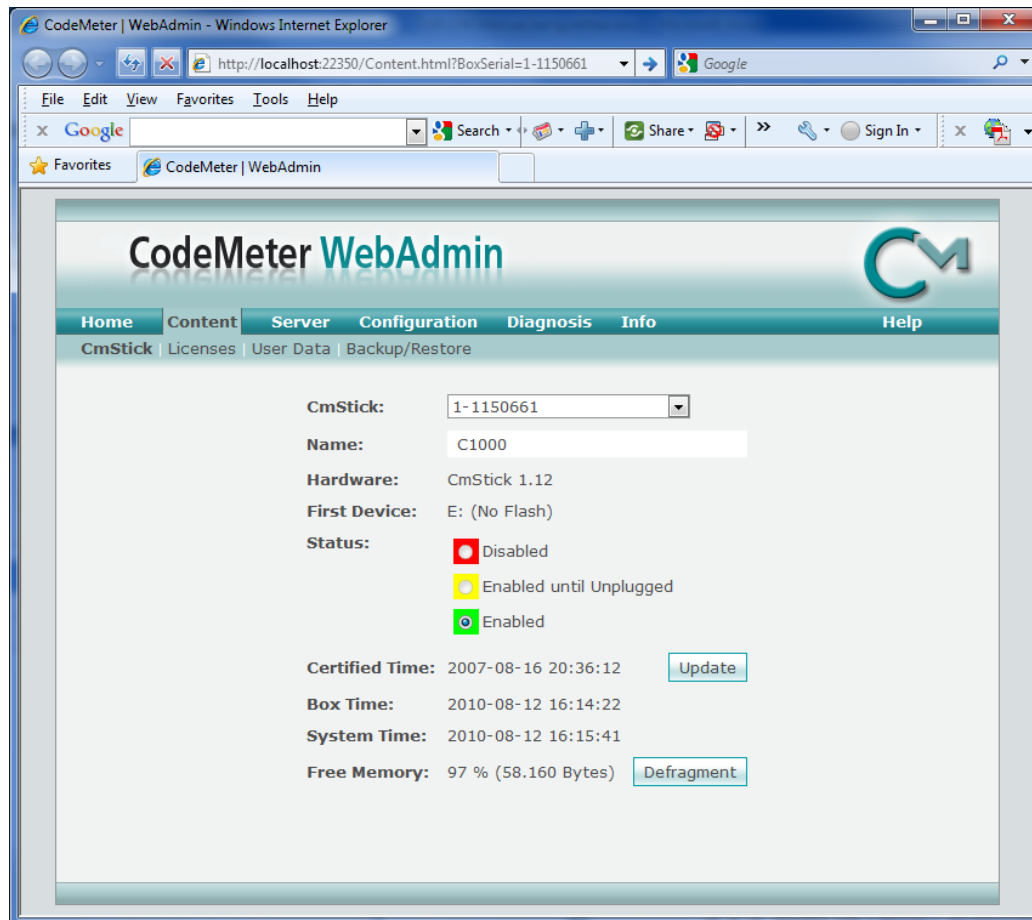
For Local licences, double click on TUFLOW.exe to check that the licensing on the dongle is picked up. Note for 2009-07, 2008-08, 2007-07 and 2006-06 TUFLOW releases, the “DA” builds or later will need to be used to recognise a WIBU Codemeter (metal) dongle.

For Network licences, the Codemeter will need to be setup as a service using the following steps:

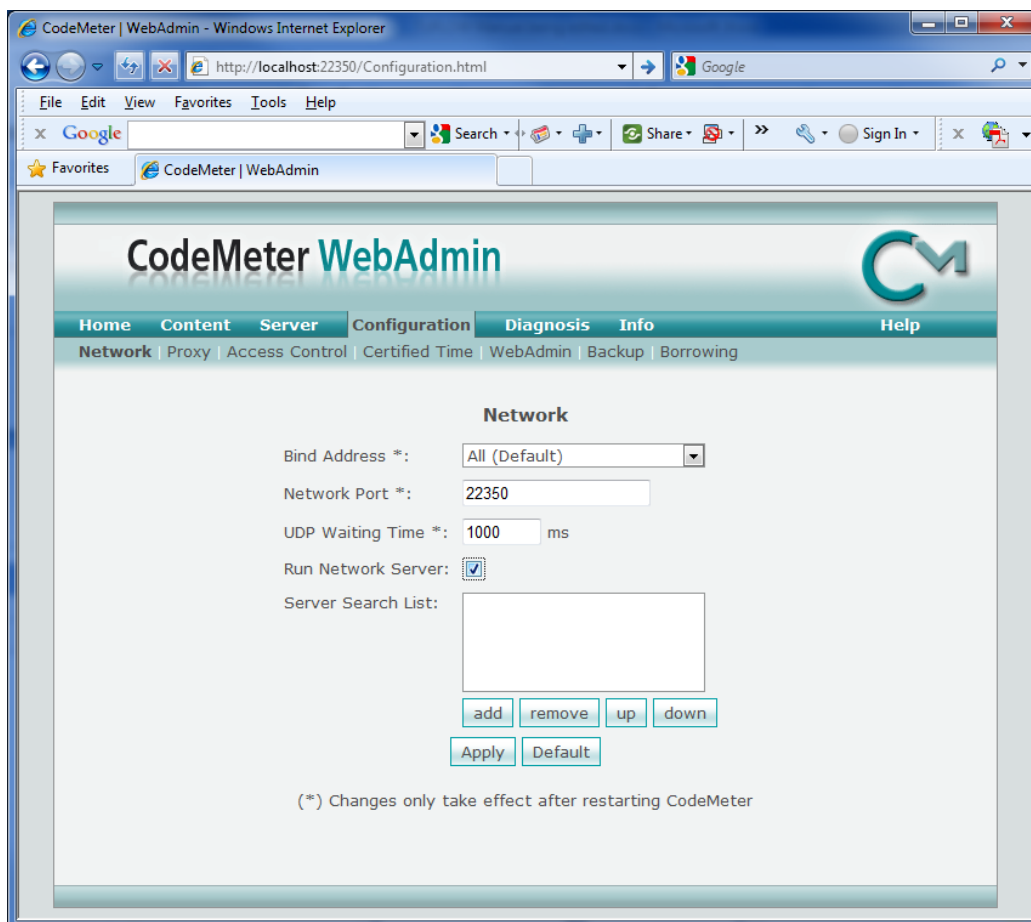
- 1 On the machine with the Network dongle attached, click on the Codemeter icon  in the system tray to bring up the Codemeter Control Center dialog below.



- 2 The dongle should appear under the License tab.
- 3 Click WebAdmin (WebAdmin may also directly be accessed by right clicking on the Codemeter icon in the system tray). This will open your preferred internet browser and appear something like the below.



- 4 Go to the Configuration tab (see below) and tick “Run Network Server”, then click Apply.



- 5 The network dongle should now be accessible by other computers. Note, the above process only needs to be run on the computer with the network dongle attached.