



"Where will our knowledge take you?"



Into the future

Where does your money go?

Sales and annual fees income

- 40% R&D (coding, testing)
- 40% Support Services (support@tufLOW.com, Wiki)
- 20% Admin, licensing and marketing (sales@tufLOW.com)

Training income – break even

Software Business Unit since 2016

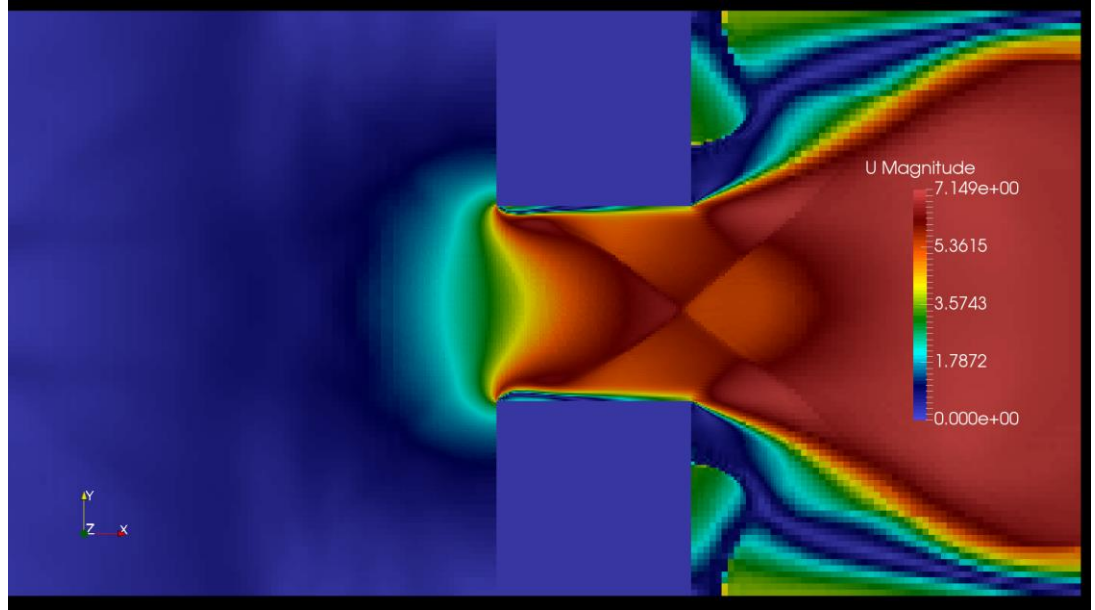
- Projects don't come first anymore!
- Not just Phil, Sandy and Bill – TUFLOW Team now >10 full-time staff



HPC QuadTree

Mesh Refinement

- Reduce sizes of selected cells by factor of two
- Multiple layers of reduction
- 2D hydraulics and preliminary testing completed
- Input and output commenced (Major task)



1972 1989 1990 2001 2002 2004 2006 2010 2011 2012 2013 2014 2015 2016 2017

One TUFLOW.exe

Moved TUFLOW FV alongside Classic, HPC and ESTRY

Greater integration of all engines

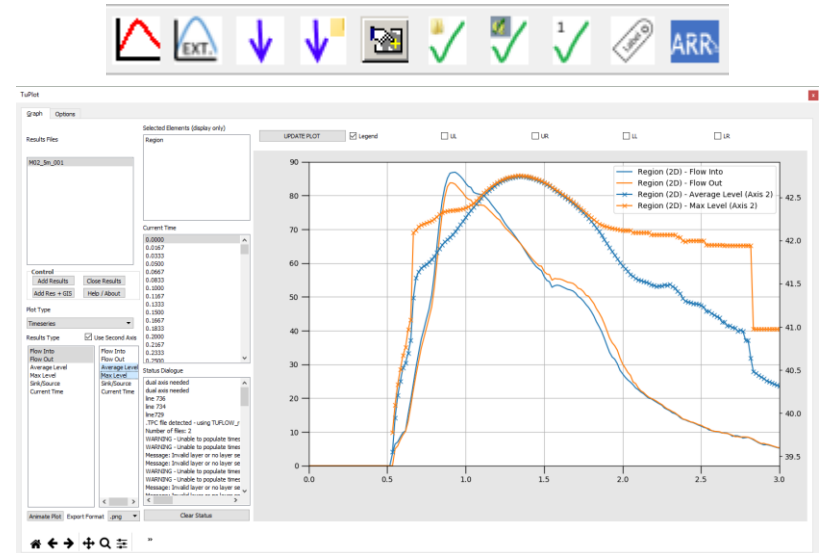
- ESTRY linked to all (Classic, HPC and FV)
- More seamless transition between engines
- Shared common functionality, inputs and outputs
- Potential linking of Classic, HPC, FV



Recent QGIS Developments

QGIS

- Ported TUFLOW Plugins to QGIS 3
- Available now in the plugin repository
- New workflow tools including:
 - Insert TUFLOW attributes to existing GIS layer e.g. 1d_nwk attributes and a council stormwater database
 - Quick TUFLOW layer styling
 - Quick Labelling
 - Australian Rainfall & Runoff 2016 auto storm generation tool (for Australian users)
 - Export plot data to CSV



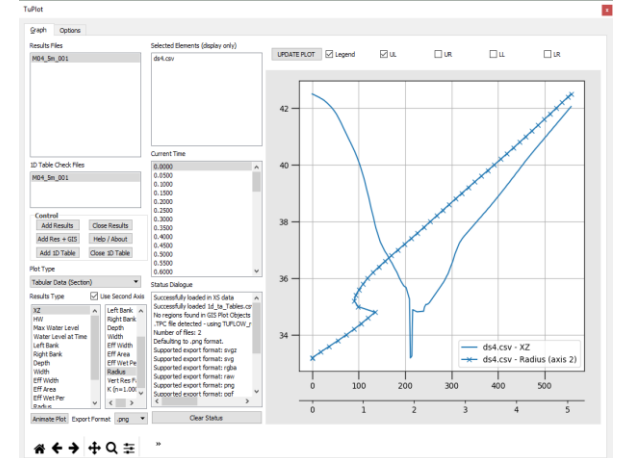
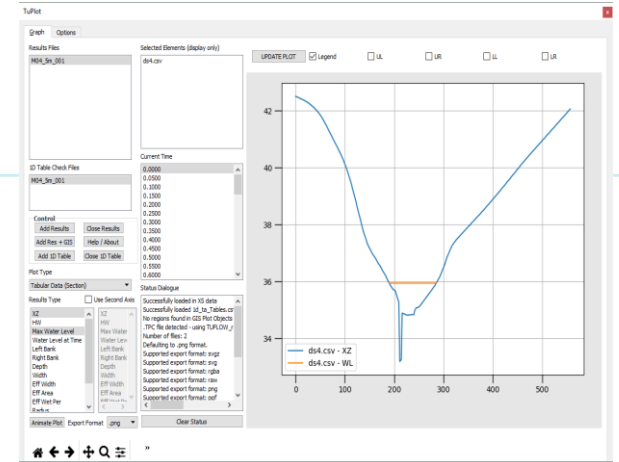
Sneak Peak into the Future

ArcGIS, MapInfo and QGIS

- New tools to help with model building and workflow

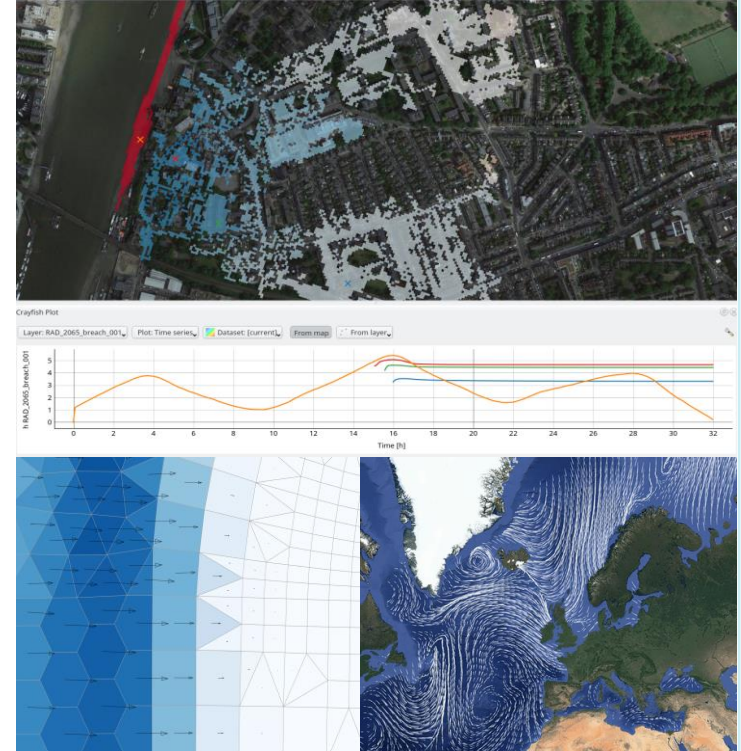
TUPLLOT

- Integration with model building and viewing outputs
 - On the fly 1D cross section editing in QGIS
 - Viewing water level results on cross sections
 - Viewing hydraulic properties using 1d_ta_tables_check.csv
 - Creating 1D open channel ESTRY inputs in QGIS
 - Troubleshooting complex 1D pipe networks



Crayfish by Lutra Consulting

- Being ported to QGIS 3
- Support for TUFLOW DAT, XMDF, grid and NETCDF outputs
- Faster and Files > 2Gb
- Data calculator
- 3D Canvas support
- Time series, long-section, cross-section



Flexible Licensing Options

- Perpetual
- Yearly Subscription
- Monthly Rental Service
- Daily – Cloud Simulation Service
 - Ideally suited for short term, bulk simulations
- Hosting Network Licenses on the Cloud
- Enterprise Agreement



1972 1989 1990 2001 2002 2004 2006 2010 2011 2012 2013 2014 2015 2016 2017

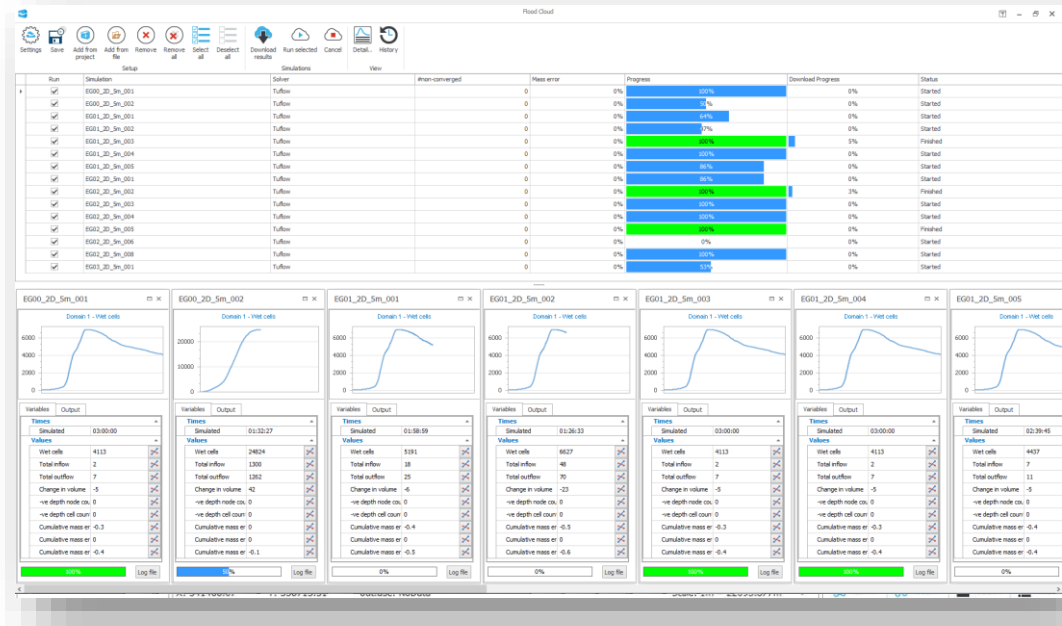


Flood Modeller

- Linking Flood Modeller and TUFLOW HPC

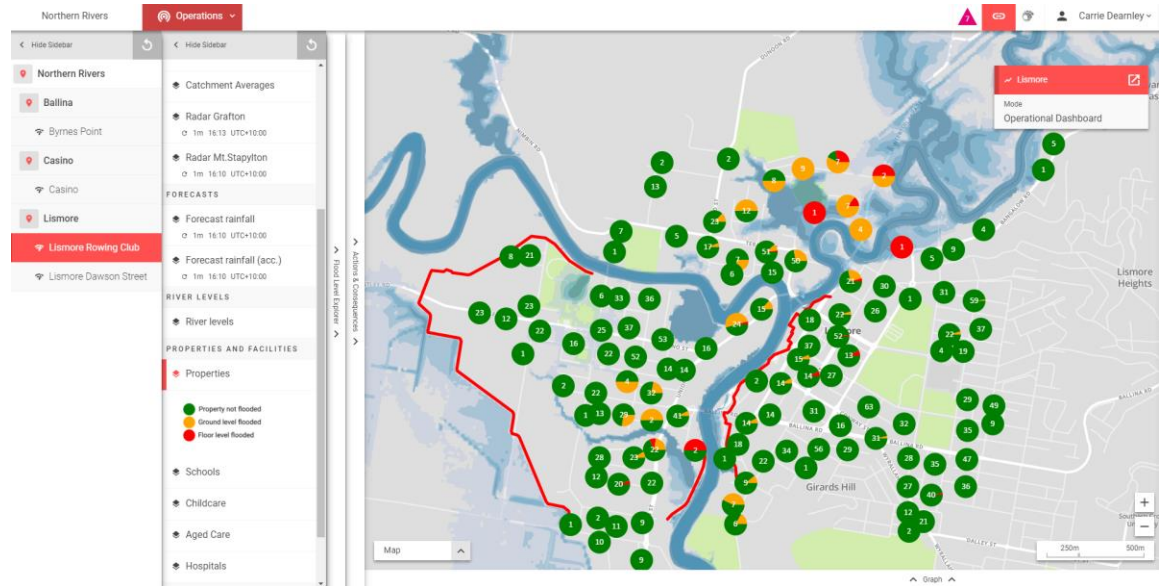
Flood Cloud

- Running TUFLOW in Flood Cloud



FloodIntel

- Intuitive: no training required
- Web-based: no license restrictions
- Real-time: integrates multiple data feeds and formats
- Customisable: to each floodplain and each user

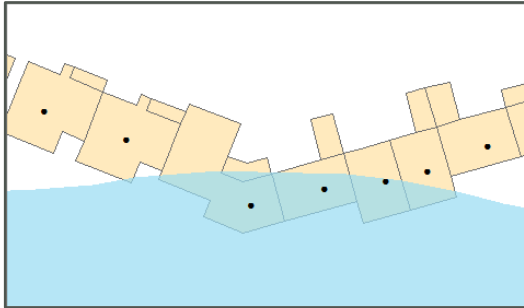


1972 1989 1990 2001 2002 2004 2006 2010 2011 2012 2013 2014 2015 2016 2017

Properties at Risk

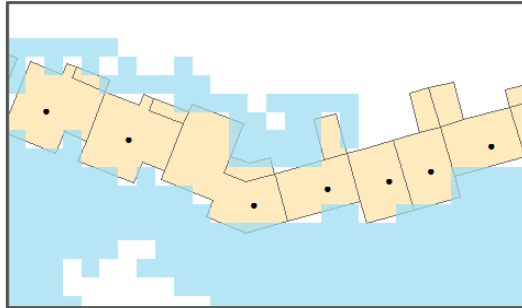
Fluvial / Coastal Flooding

Simple in/out of flood extent



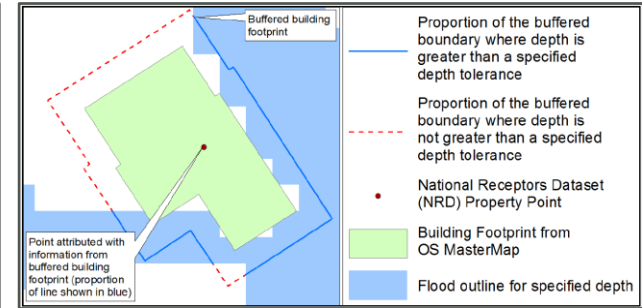
Surface Water Flooding

Typically more disperse and fragmented



RoFfSW PPD

Basic Principles of Analysis
EA, July 2014



1972 1989 1990 2001 2002 2004 2006 2010 2011 2012 2013 2014 2015 2016 2017

And...

- Bridge Loss Calculator – Utility
- Flood Damages – Utility
- Debris and blockage modelling (EA/DEFRA guidance SC110005)
- TUFLOW HPC Advection Dispersion
- TUFLOW HPC Turbulence model enhancements
(prandtl, k-omega / k-epsilon)
- And much, much, more
(over one hundred “minor” enhancements on list)

